

EDGE PRESSING AND CUTTING DEVICE

OVERVIEW:

- ◇ Edge pressing device for establishing a longitudinal joint or for shaping and compacting contact surfaces in order to prevent water, dirt and roots from penetrating
- ◇ Edge pressing and cutting device for cutting still-warm asphalt to correct mistakes
- ◇ Track indicator for improved alignment of the compaction lane on a mapped-out processing line
- ◇ Water sprinkling system: Preventing the bitumen from adhering
- ◇ DV+/HX series: Option for separate sprinkling of the edge pressing and cutting device, independently of the drum sprinkling system
- ◇ Small overhang
- ◇ Robust version
- ◇ Option for retroactive attachment
- ◇ Operation: Raise and lower the edge pressing and cutting device using the rocker switch on the drive lever
- ◇ Simple replacement of pressing rolls and cutting discs

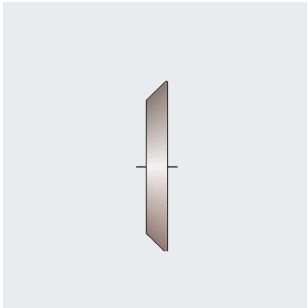
- ◇ 1 Edge pressing and cutting device
- ◇ 2 Track indicator



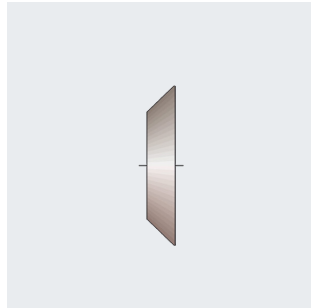
AVAILABILITY:

| TYPES | | HD 10 - 12 HD 10i - 12i | HD 13 - 14 HD 13i - 14i | HD 70 - 110 | HD+ 90 - 140 | HD+ 70i - 140i | DV+ 70i - 90i HX 70i - 90i | HP 180, HP 240, HP 280, HP 180i, HP 280i |
|-------------------------|------------------------------|----------------------------|----------------------------|-------------|--------------|----------------|-------------------------------|--|
| Configurations | Variant | | | | | | | |
| Mounting position | Front left | | • | | • | • | • | |
| | Front right | • | • | • | • | • | • | |
| | Rear left | | | | | | • | |
| | Rear right | | | | | | • | • |
| | Front left and right | • | • | | | • | • | |
| | Front right and rear left | | | | | | • | |
| | Front right and rear right | | | | | | • | |
| | | | | | | | | |
| Track indicator | Standard | | | • | • | • | • | |
| | Option, 1-fold | • | • | | | | | |
| | Option, 2-fold | • | • | | | | | |
| | | | | | | | | |
| Water sprinkling system | Standard | • | • | • | • | • | • | • |
| | With electrical preselection | Option | Option | Option | Standard | Standard | Standard | Standard |
| | | | | | | | | |
| Pressing roll | 45 degrees, 3 cm layer | • | • | • | • | • | • | • |
| | 45 degrees, 5 cm layer | • | • | • | • | • | • | • |
| | 45 degrees, 8 cm layer | | • | • | • | • | • | • |
| | 45 degrees, 12 cm layer | | | • | • | • | • | • |
| | 60 degrees, 3 cm layer | • | • | • | • | • | • | • |
| | 60 degrees, 5 cm layer | • | • | • | • | • | • | • |
| | 60 degrees, 8 cm layer | | • | • | • | • | • | • |
| | 60 degrees, 12 cm layer | | | • | • | • | • | • |
| | 60 degrees, 18 cm layer | | | | | | • (HX) | |
| | 200 mm diameter, 100 mm wide | • | • | | | | | |
| | 200 mm diameter, 180 mm wide | | | | | | • | |
| | 360 mm diameter, 190 mm wide | | | | | | | • |
| | | | | | | | | |
| Cutting disc | 350 mm diameter | • | • | | | | | |
| | 390 mm diameter | | | • | • | • | • | • |

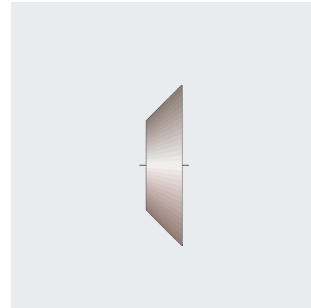
PRESSING ROLLS AND CUTTING DISCS:



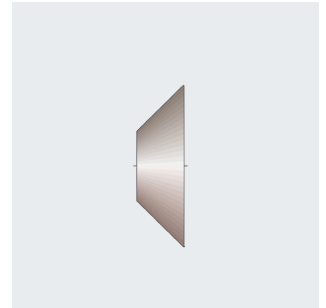
Pressing roll, 45 degrees,
3 cm layer



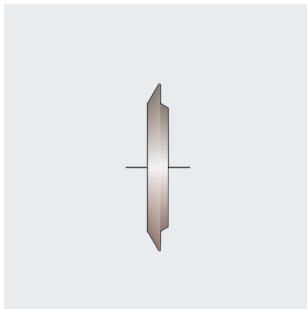
Pressing roll, 45 degrees,
5 cm layer



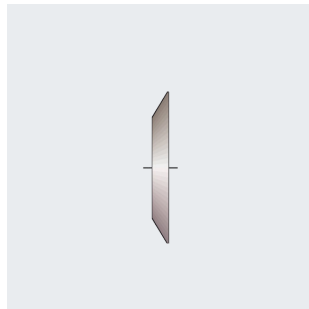
Pressing roll, 45 degrees,
8 cm layer



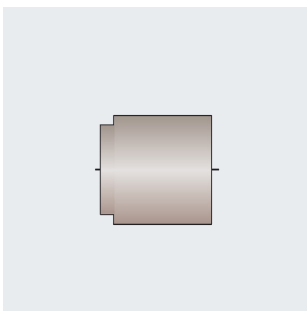
Pressing roll, 45 degrees,
12 cm layer



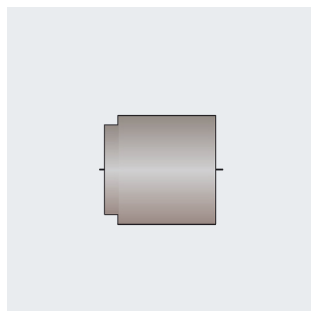
Pressing roll, 60 degrees,
3 cm layer



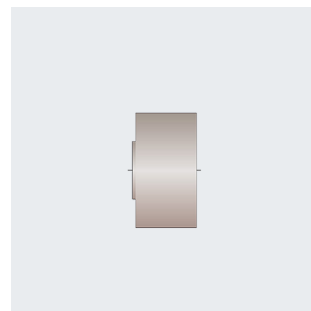
Pressing roll, 60 degrees,
5 cm layer



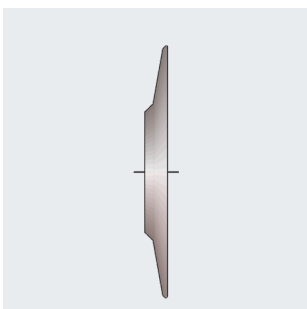
Pressing roll,
200 mm diameter,
100 mm width



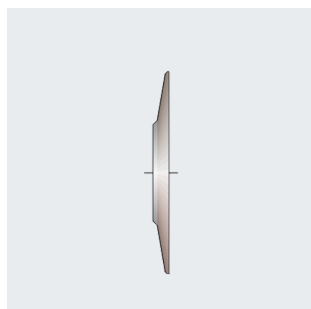
Pressing roll,
200 mm diameter,
180 mm width



Pressing roll,
360 mm diameter,
190 mm width



Cutting disc,
390 mm diameter



Cutting disc,
350 mm diameter